

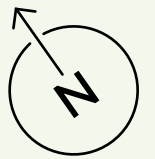
11 BELGRAVE

VICTORIA

FLOOR PLAN AND
SPACE PLAN PACK



FLOOR		WORKSPACE	TERRACES, GARDEN & AMENITY	PLAN
		SQ FT	SQ FT	
Eighth	THE PLATFORM	-	1,854	
Seventh	THE PAVILION & COMMUNAL TERRACE	-	2,741	
Seventh		7,014	2,852	
Sixth		13,165	251	
Fifth		14,065	-	
Fourth		14,034	-	
Third		14,024	-	
Second		14,037	-	
First		13,403	-	
Ground		5,054	-	
Ground	GARDEN ROOM & RECEPTION	-	5,672	
Ground	GARDEN & DECK	-	3,315	
Ground	CAFÉ	-	3,311	
Ground & Lower Ground	MARCHON GYM	-	4,997	
TOTAL		94,796	24,993	



GROUND FLOOR

Office
5,054 sq ft

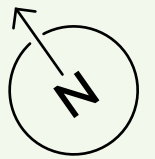
Reception & Garden Room
5,672 sq ft

Cafe
3,311 sq ft

Outdoor Space
5,382 sq ft



- OFFICE
- RECEPTION & GARDEN ROOM
- CAFE
- COURTYARD & GARDENS
- CORE
- GYM

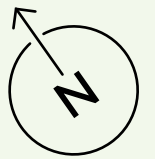


FIRST FLOOR

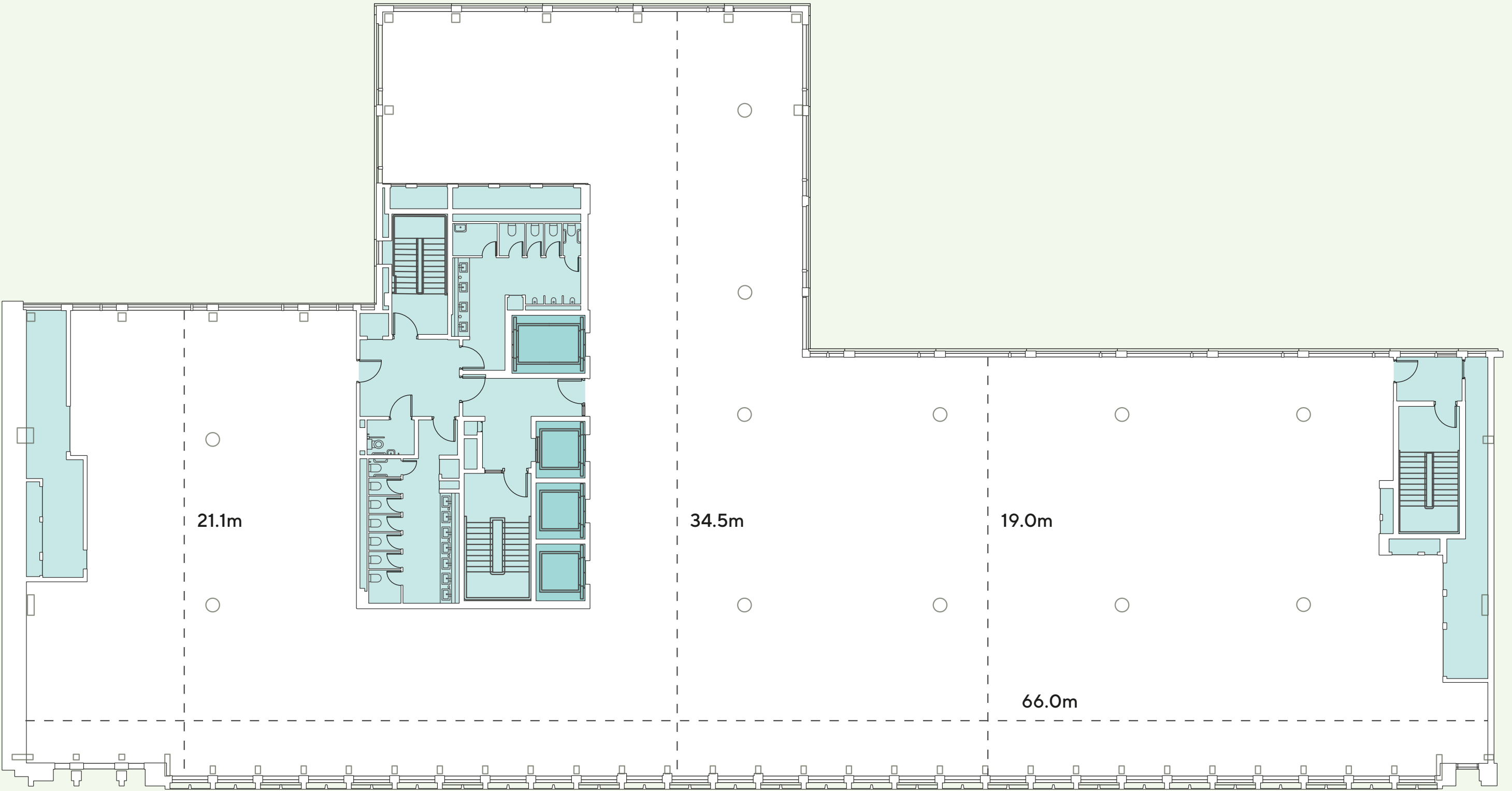
Workspace
13,403 sq ft



- WORKSPACE
- GREEN ROOF
- CORE



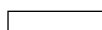

GUILDHOUSE STREET

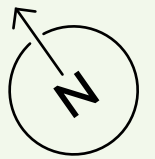


BELGRAVE ROAD

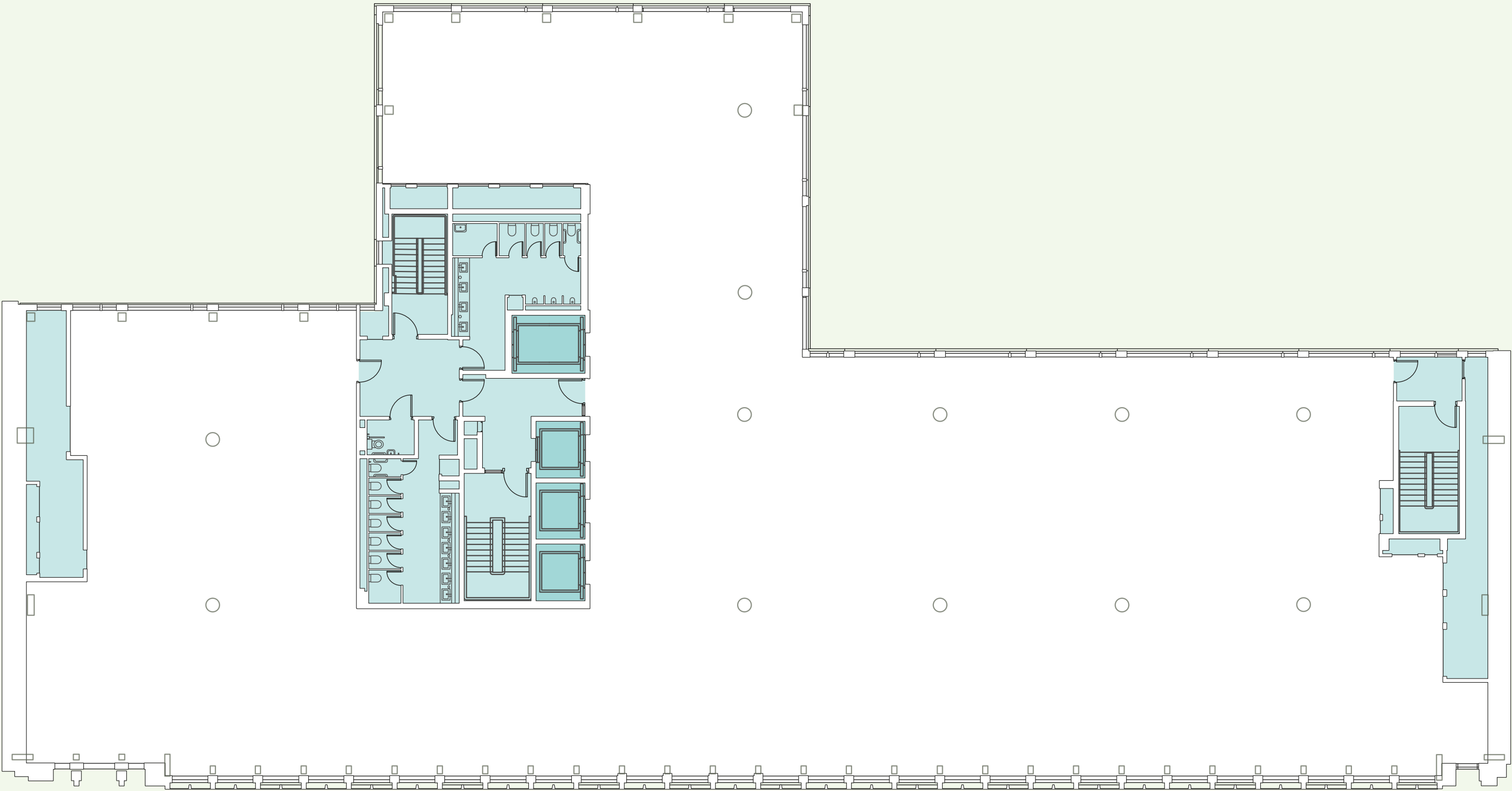
SECOND FLOOR

Workspace
14,037 sq ft

-  WORKSPACE
-  CORE



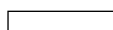

GUILDHOUSE STREET

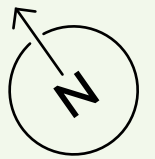


BELGRAVE ROAD

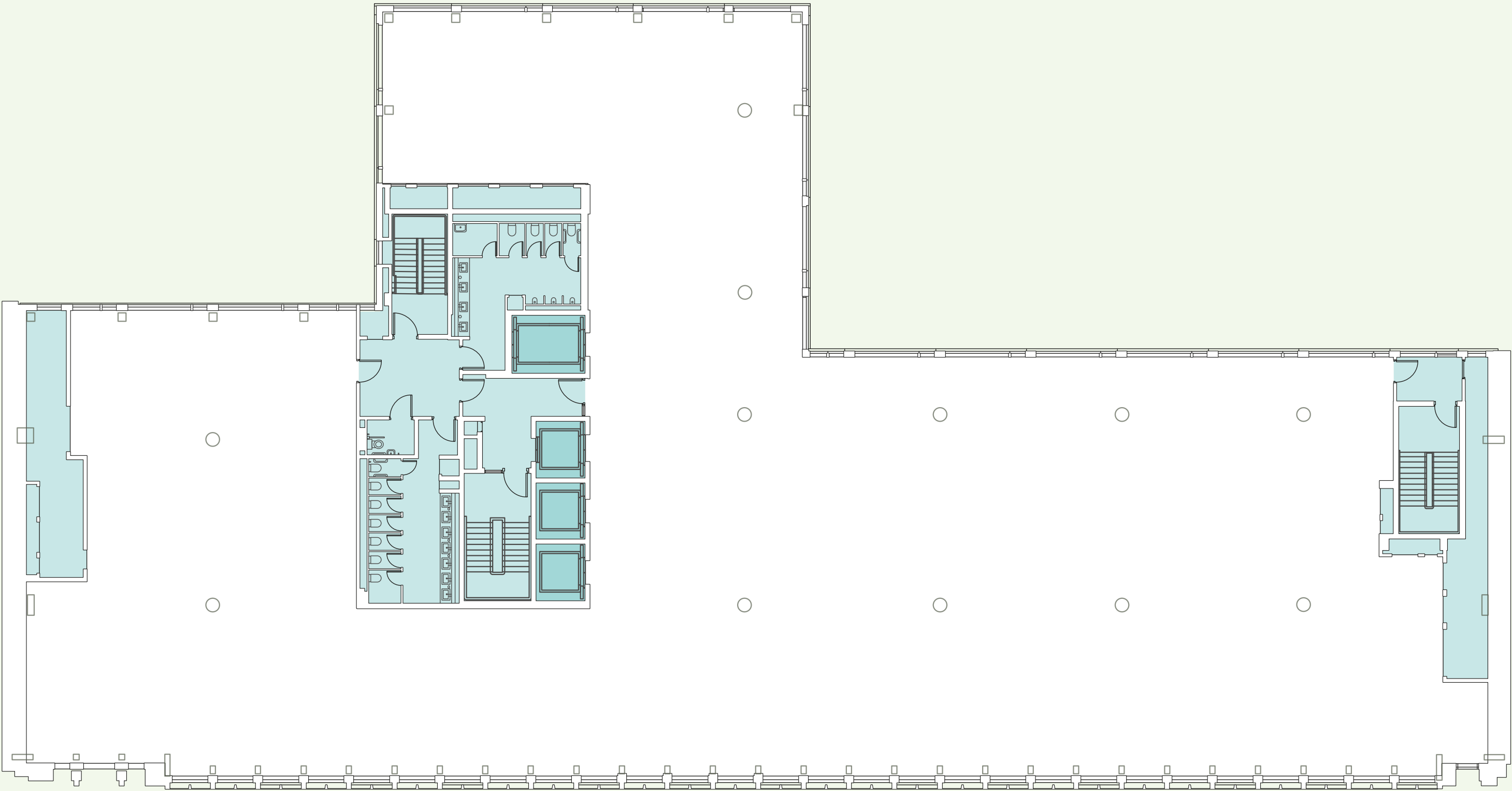
THIRD FLOOR

Workspace
14,024 sq ft

-  WORKSPACE
-  CORE



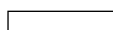

GUILDHOUSE STREET

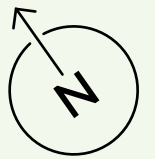


BELGRAVE ROAD

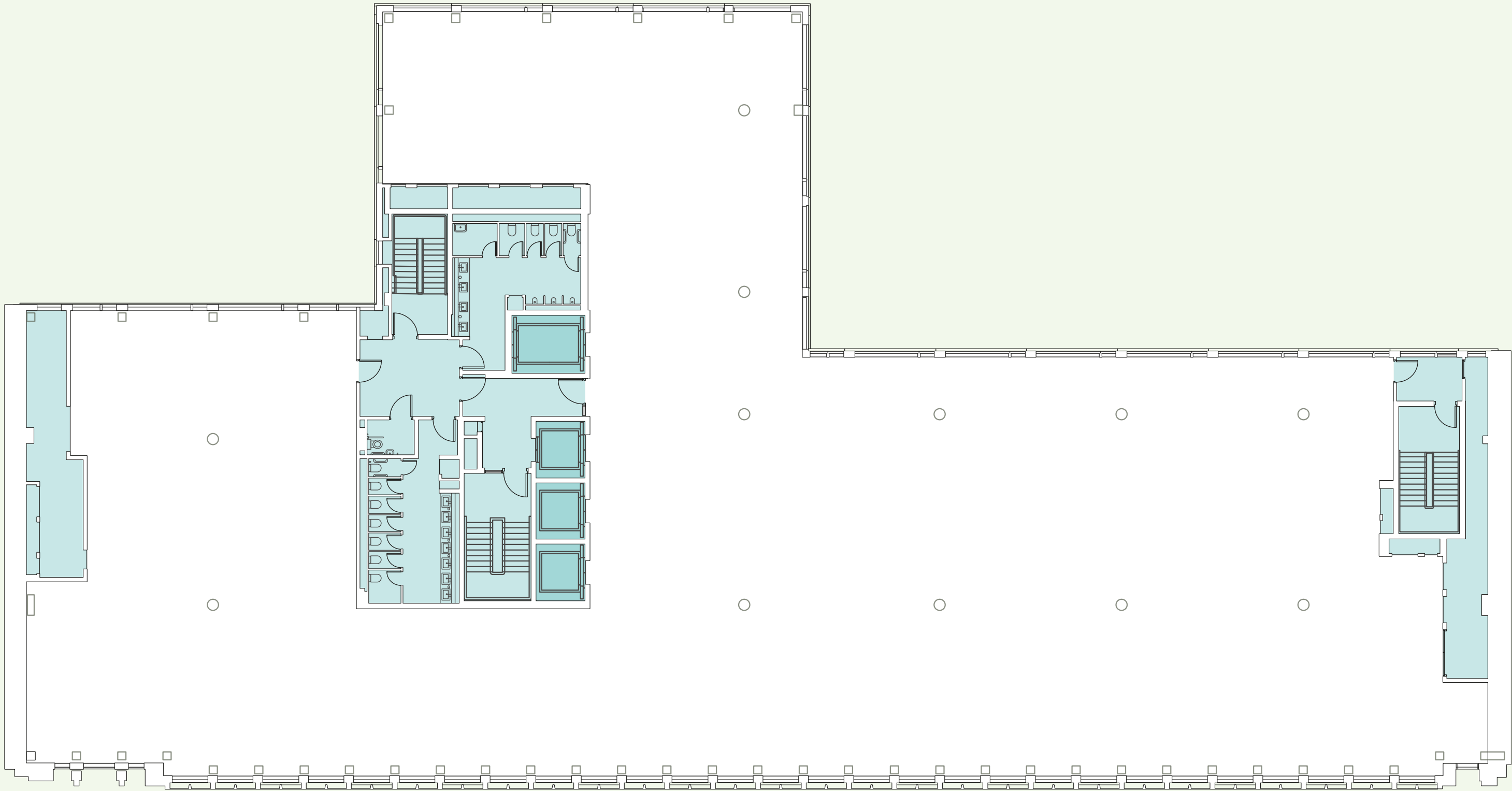
FOURTH FLOOR

Workspace
14,034 sq ft

-  WORKSPACE
-  CORE



GUILDHOUSE STREET

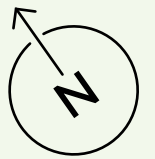


BELGRAVE ROAD

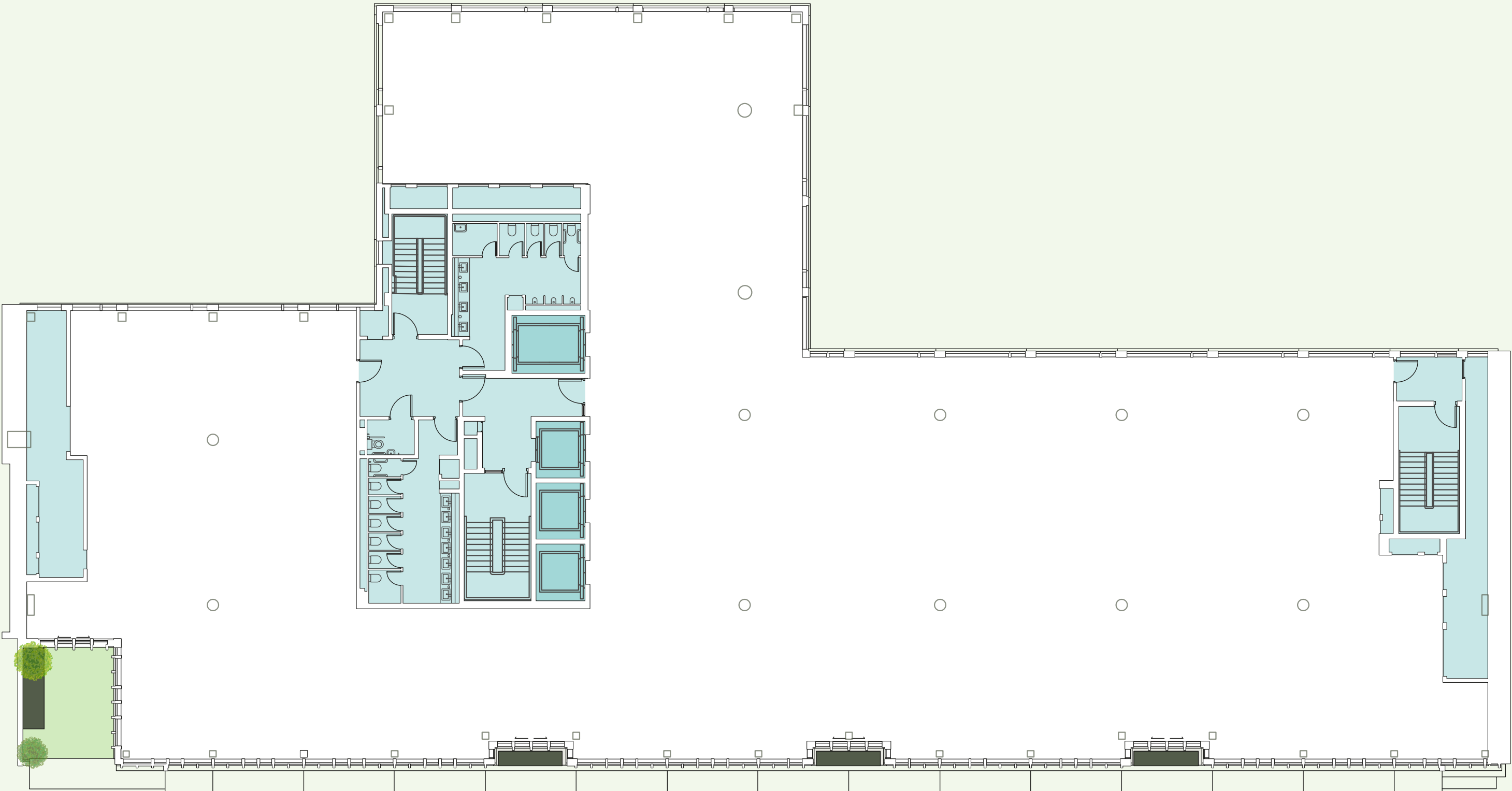
FIFTH FLOOR

Workspace
14,065 sq ft

- WORKSPACE
- CORE



GUILDHOUSE STREET






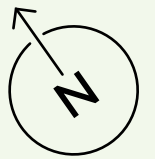
BELGRAVE ROAD

SIXTH FLOOR

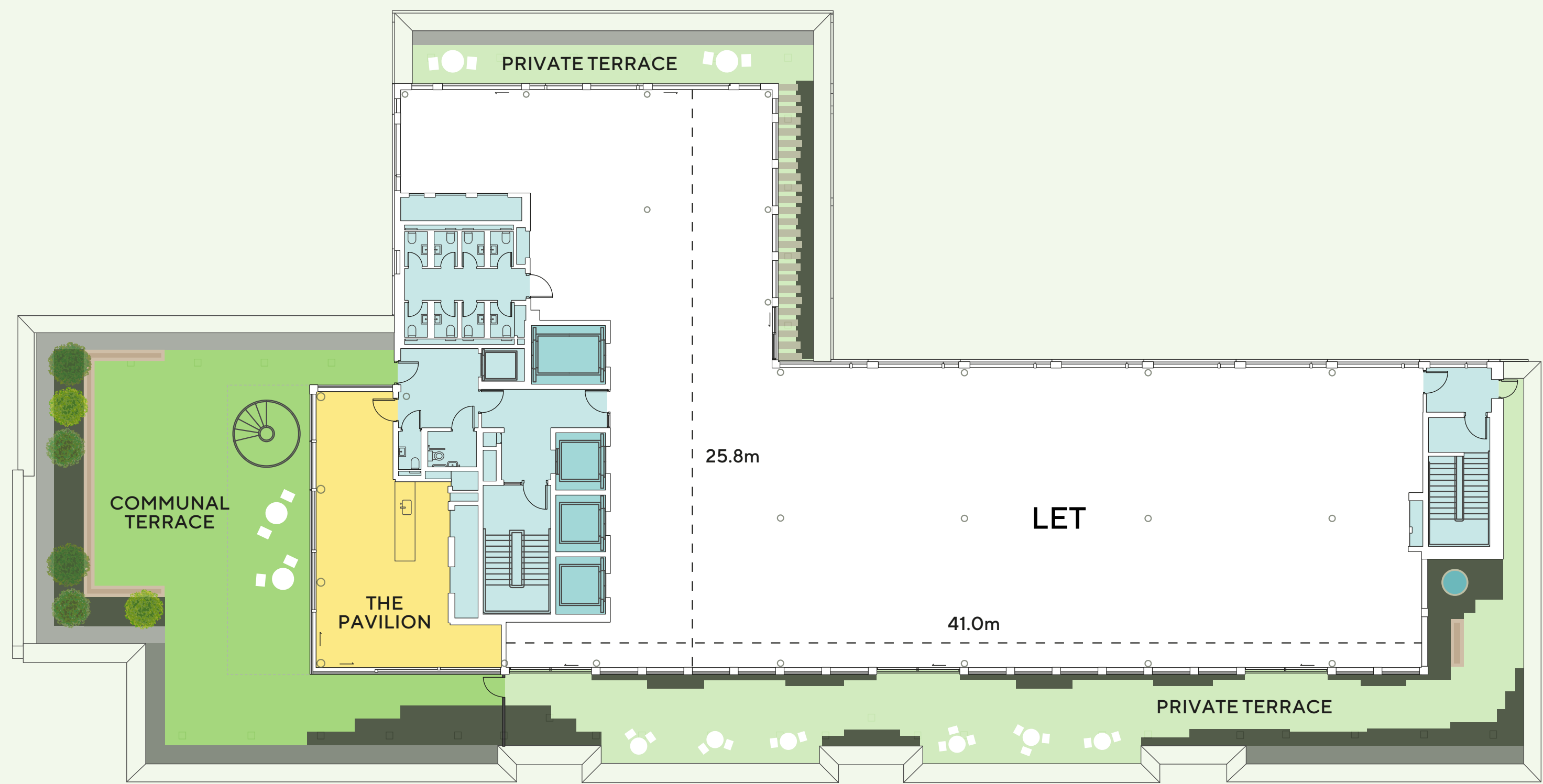
Workspace
13,165 sq ft

Private Terrace
251 sq ft

-  WORKSPACE
-  PRIVATE TERRACE
-  CORE



GUILDHOUSE STREET



BELGRAVE ROAD

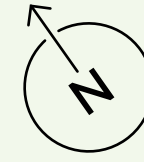
SEVENTH FLOOR

LET - Workspace
7,014 sq ft

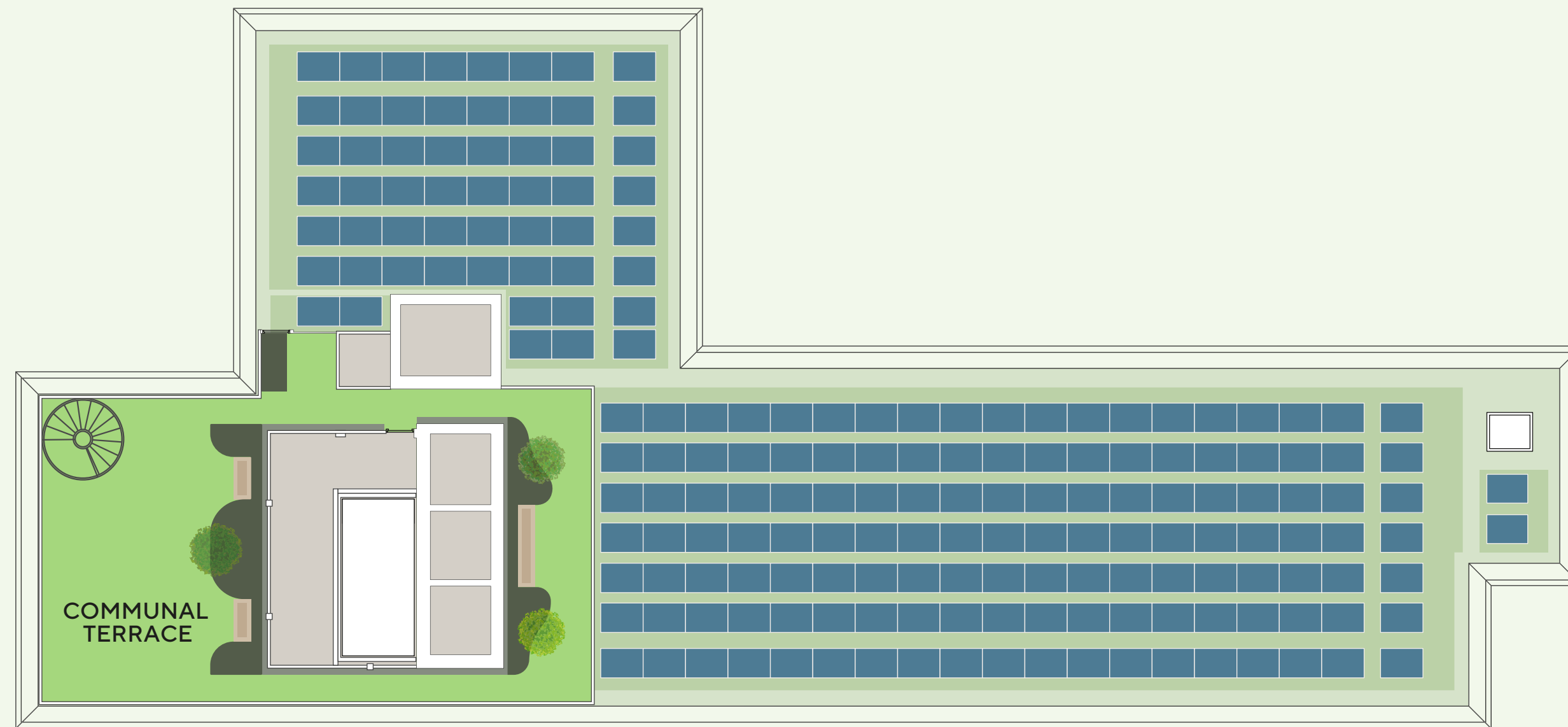
Private Terraces
2,852 sq ft

Communal Terrace & Pavilion
2,741 sq ft

- WORKSPACE
- PRIVATE TERRACES
- COMMUNAL TERRACE
- THE PAVILION
- CORE



GUILDHOUSE STREET






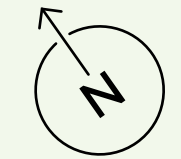
BELGRAVE ROAD

THE PLATFORM

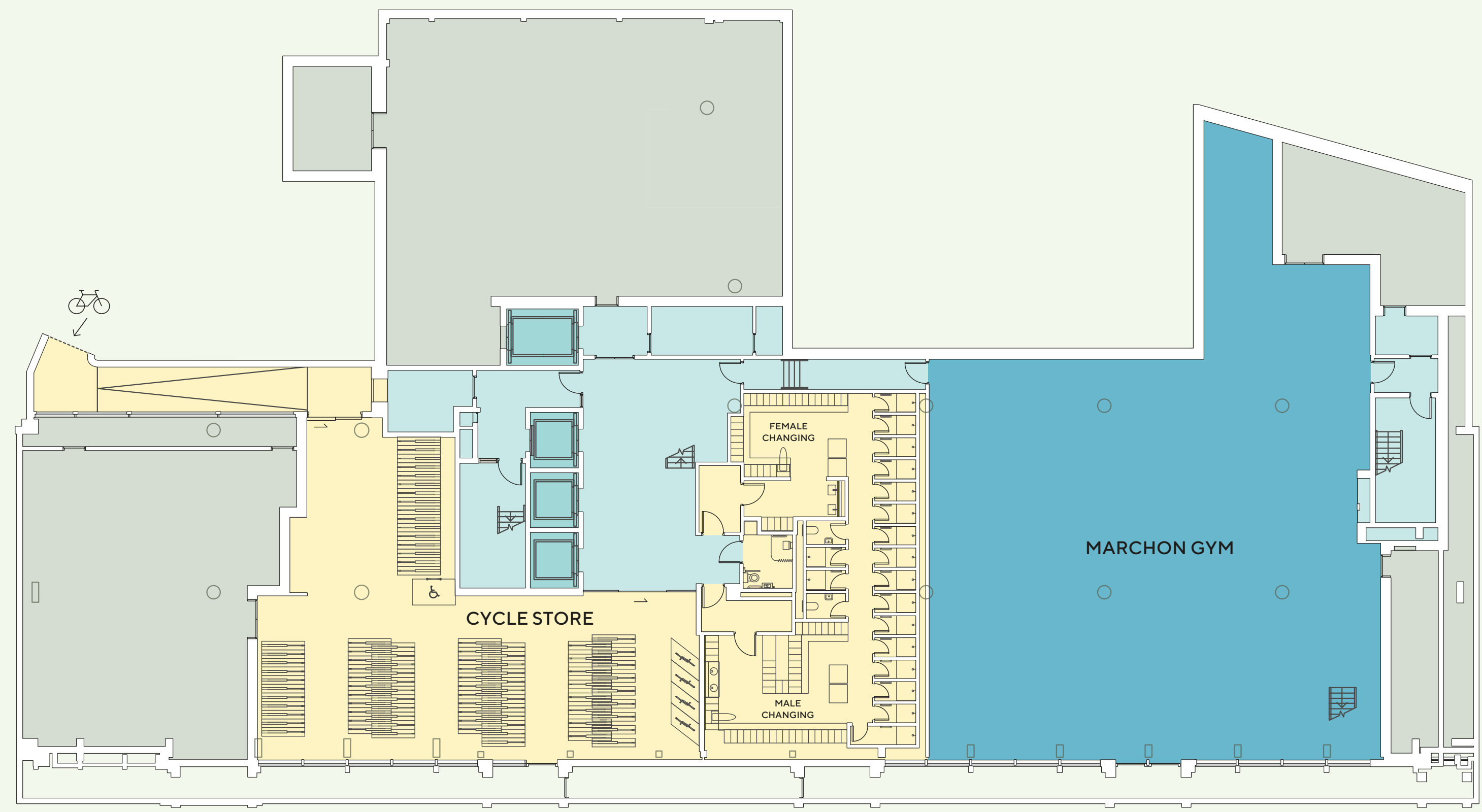
The Platform

1,854 sq ft

-  COMMUNAL TERRACE
-  GREEN ROOF
-  PV PANELS



GUILDHOUSE STREET



BELGRAVE ROAD

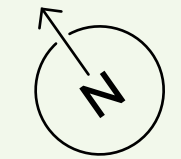
LOWER GROUND FLOOR

4,997 sq ft MARCHON GYM	178 bicycle spaces	177 wet and dry 'smart' lockers
19 showers	5 electric scooter docks	1 bicycle maintenance station
14 folding bike locker spaces	2 filtered hydration taps	

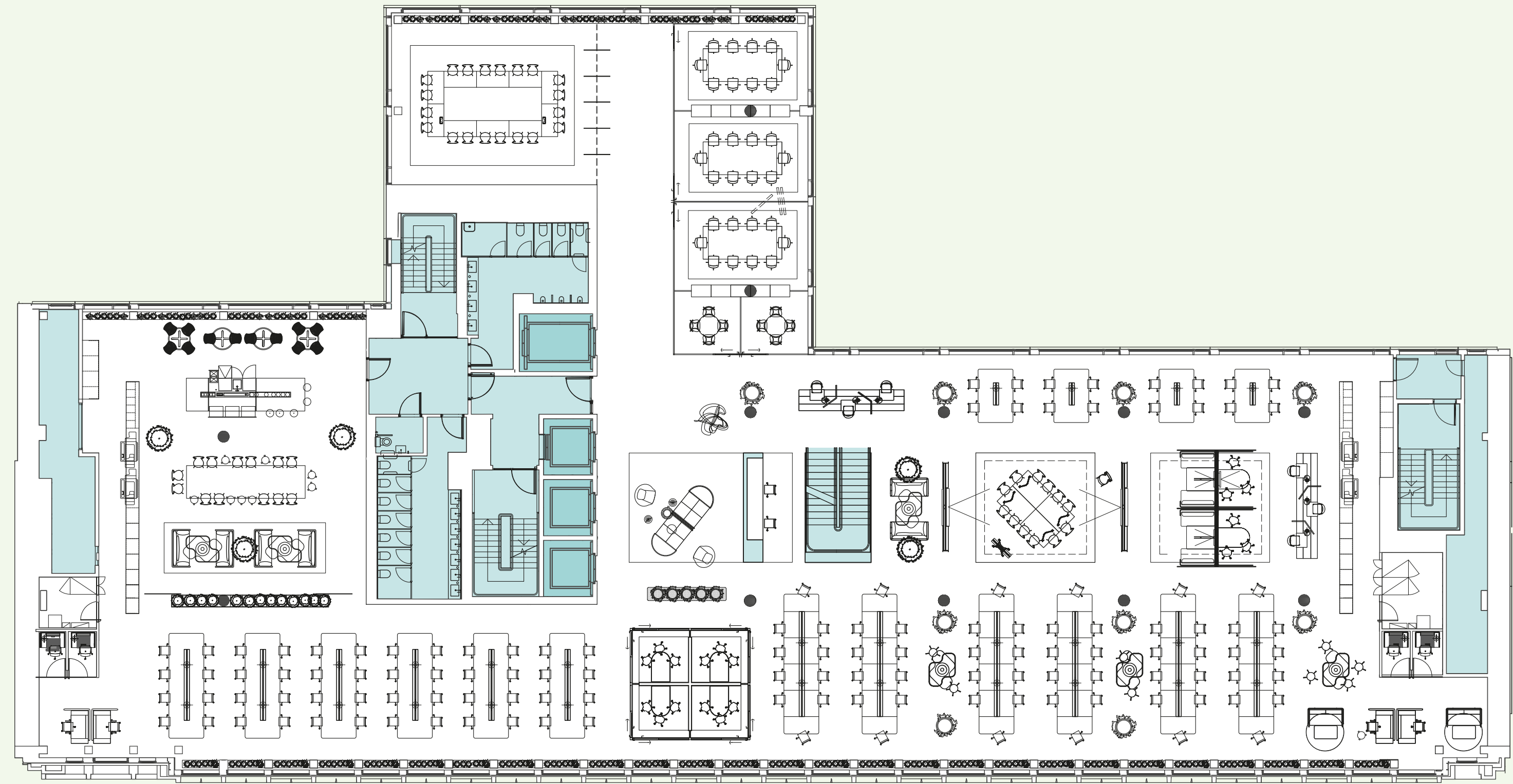
- Vanity stations with hair drying facilities
- Ironing facilities
- Towel service

- COMMUTER FACILITIES
- MARCHON GYM
- REFUSE & PLANT
- CORE

SPACE PLANS



GUILDHOUSE STREET



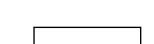

BELGRAVE ROAD

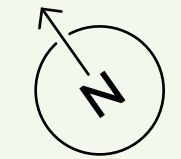
TYPICAL CREATIVE

14,037 sq ft (Second Floor)

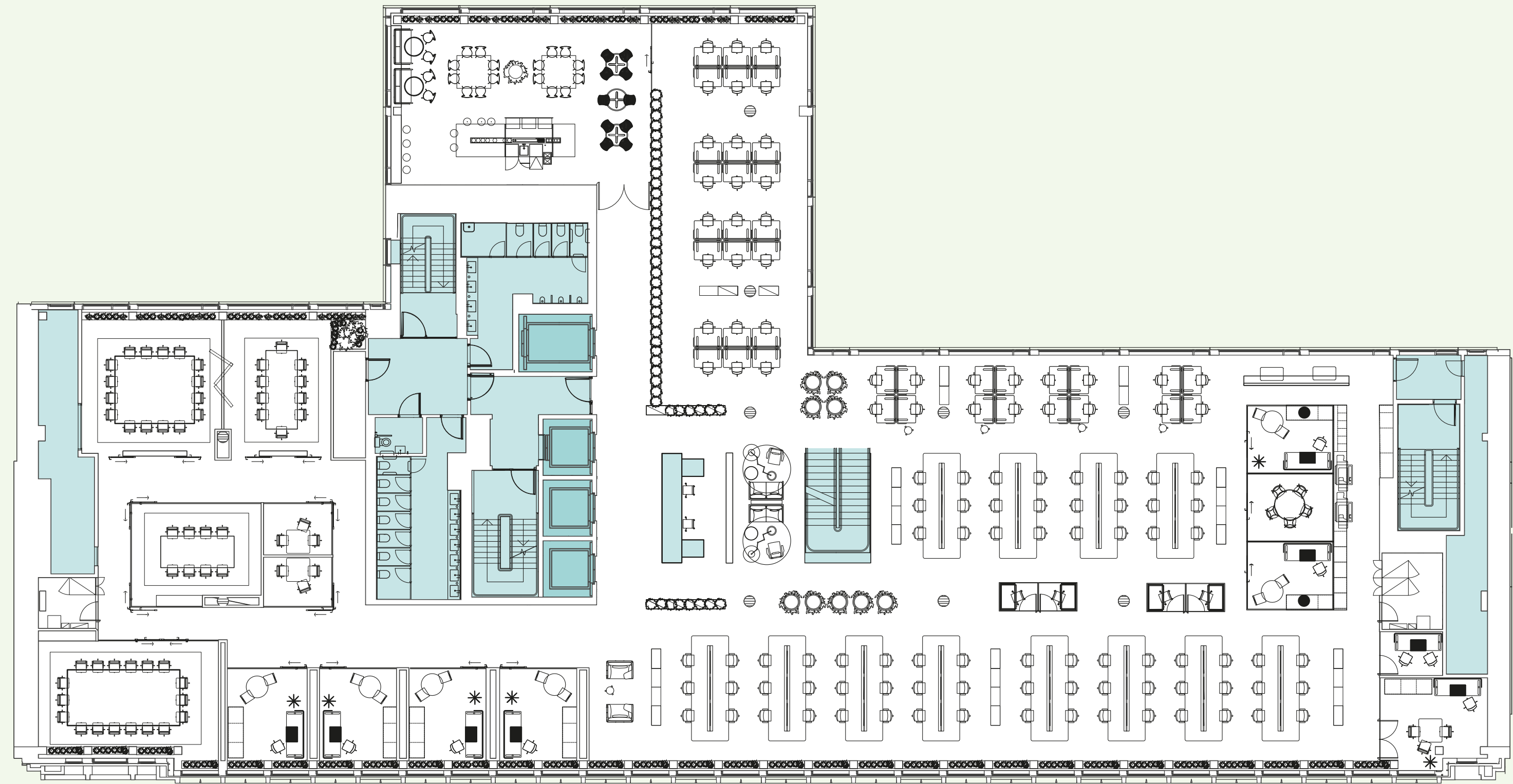
Total
128 seats | 10 sq m p/p

- | | |
|--|--|
| 128 Open workstations | 2 Collaborative high table booths |
| 4 3p internal meeting rooms | 1 Informal flex space |
| 3 10p meeting rooms (2 x rooms can be combined) | 4 Informal collaboration spaces |
| 2 4p meeting rooms | 1 Breakout space |
| 1 20p boardroom | 2 Comms rooms |
| 6 Hotdesks | 2 Print/copy/store spaces |
| 4 Phone rooms | 128 Lockers |
| 2 Collaborative team booths | 1 Reception and waiting |

 WORKSPACE
 CORE



GUILDHOUSE STREET



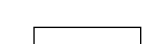

BELGRAVE ROAD

TYPICAL CORPORATE

14,037 sq ft (Second Floor)

Total
118 seats | 12 sq m p/p

- | | | | |
|------------|--|-----------|-------------------------|
| 112 | Open workstations | 1 | Large office |
| 1 | 16p meeting room | 1 | 18p boardroom |
| 1 | 10p meeting room | 5 | Phone rooms |
| 1 | 8p meeting room | 1 | Informal bench seat |
| 2 | 3p meeting rooms | 1 | Breakout space |
| 3 | 10p meeting rooms
(2 x rooms can be combined) | 1 | Comms room |
| 2 | 4p meeting rooms | 1 | Print/copy/store spaces |
| 1 | 4p internal meeting room | 48 | Lockers |
| 6 | Offices | 1 | Reception and waiting |

 WORKSPACE
 CORE

CONTACT

A development by:

Quadrum 

11belgrave.co.uk

Leasing agents:

CBRE

Matt Chicken

+44 (0)7852 205 099
matt.chicken@cbre.com

Joe Gibbon

+44 (0)7585 987 546
joseph.gibbon@cbre.com

Bertie Berry

+44 (0)7345 995 523
bertie.berry@cbre.com

 **CUSHMAN &
WAKEFIELD**

Andy Tyler

+44 (0)7973 836 236
andy.tyler@cushwake.com

Matt Waugh

+44 (0)7912 977 980
matt.waugh@cushwake.com

Guy Ritcher

+44 (0)7741 094 570
guy.ritcher@cushwake.com