

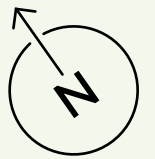
11 BELGRAVE

VICTORIA

FLOOR PLAN AND
SPACE PLAN PACK



FLOOR	WORKSPACE	TERRACES, GARDEN & AMENITY		PLAN
		SQ FT		
Eighth	THE PLATFORM	-	1,854	
Seventh	THE PAVILION & COMMUNAL TERRACE	-	2,741	
Seventh		7,014	2,852	
Sixth		13,165	251	
Fifth		14,065	-	
Fourth		14,034	-	
Third		14,024	-	
Second		14,037	-	
First		13,403	-	
Ground		5,054	-	
Ground	GARDEN ROOM & RECEPTION	-	5,672	
Ground	GARDEN & DECK	-	3,315	
Ground	CAFÉ	-	3,311	
Ground & Lower Ground	MARCHON GYM	-	4,997	
TOTAL		94,796	24,993	









GROUND FLOOR

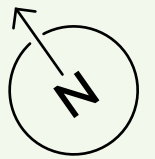
Office
5,054 sq ft

Reception & Garden Room
5,672 sq ft

Cafe
3,311 sq ft

Outdoor Space
5,382 sq ft

-  OFFICE
-  RECEPTION & GARDEN ROOM
-  CAFE
-  COURTYARD & GARDENS
-  CORE
-  GYM

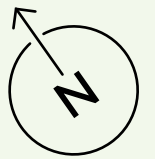


FIRST FLOOR

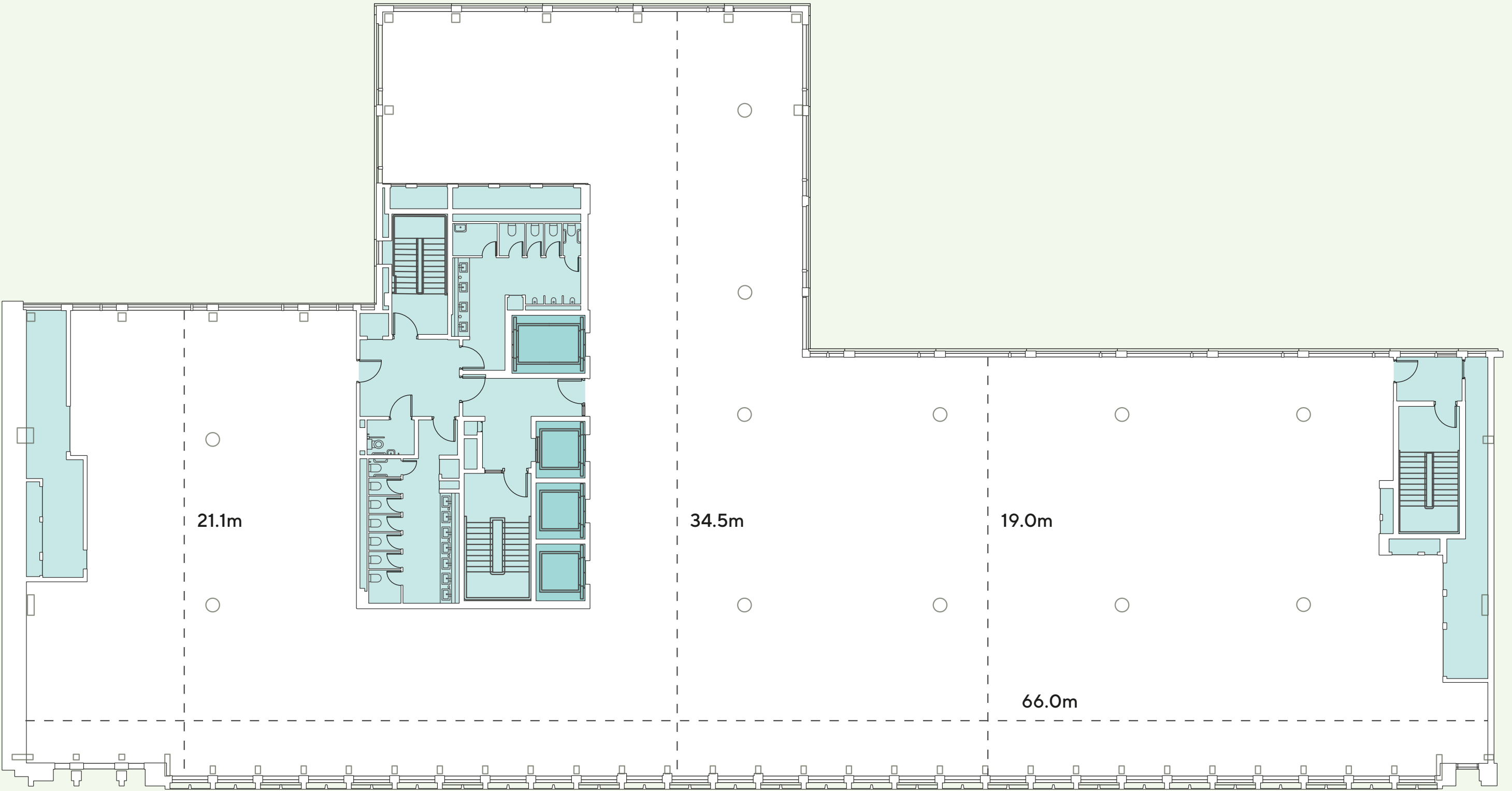
Workspace
13,403 sq ft



- WORKSPACE
- GREEN ROOF
- CORE



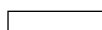

GUILDHOUSE STREET

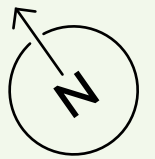


BELGRAVE ROAD

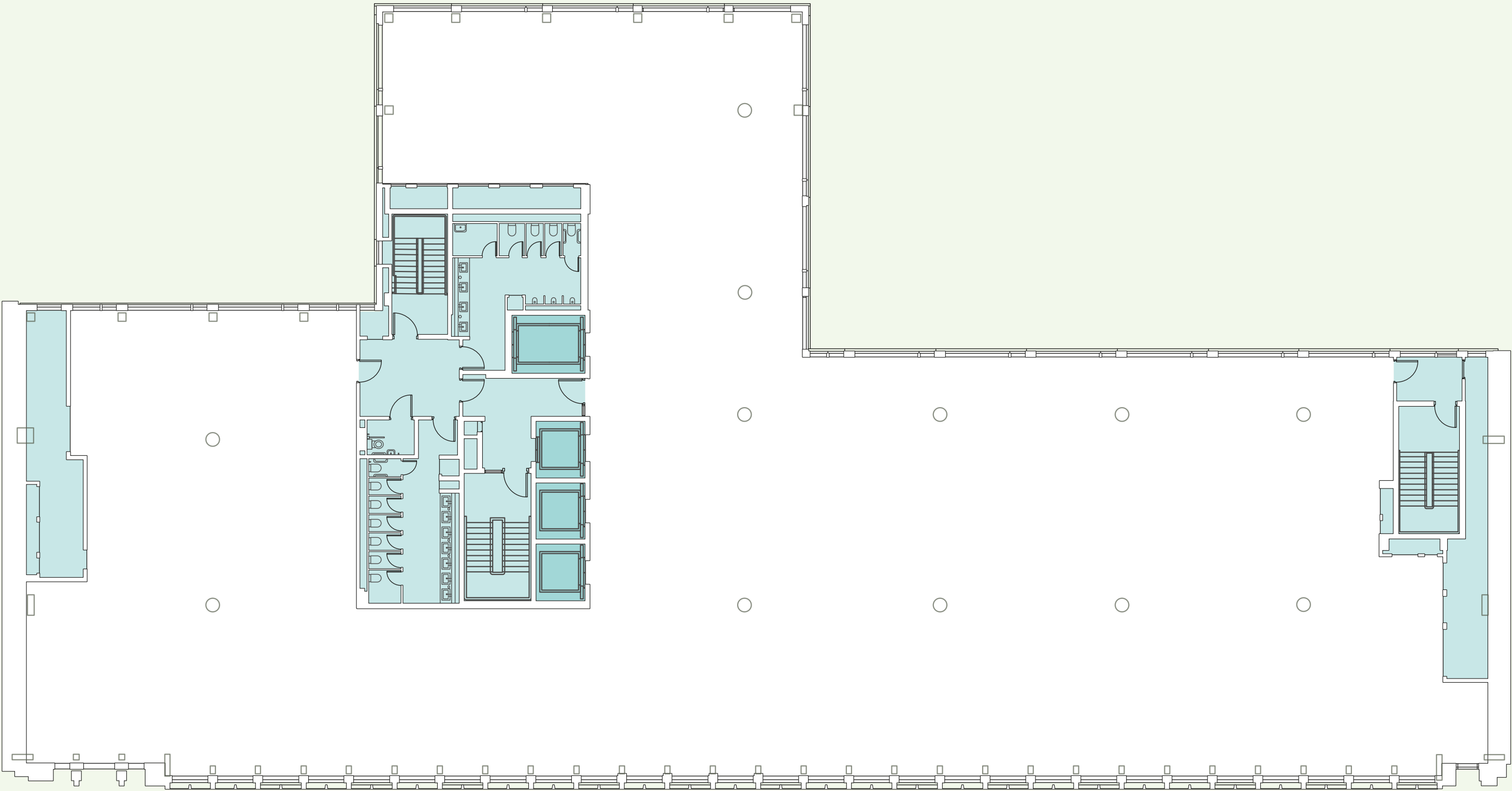
SECOND FLOOR

Workspace
14,037 sq ft

-  WORKSPACE
-  CORE



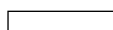

GUILDHOUSE STREET

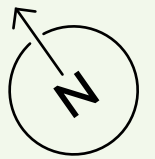


BELGRAVE ROAD

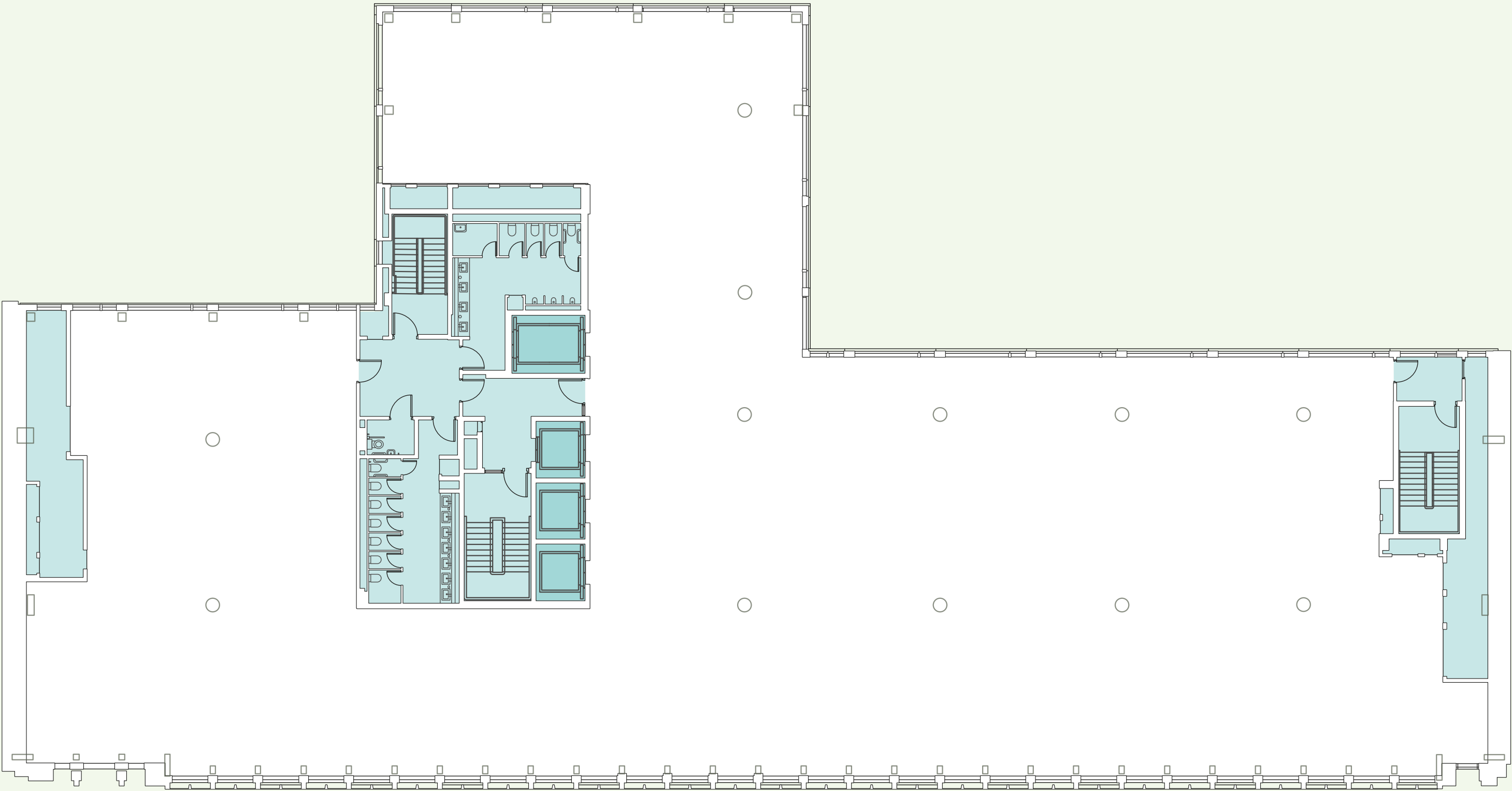
THIRD FLOOR

Workspace
14,024 sq ft

-  WORKSPACE
-  CORE



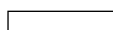

GUILDHOUSE STREET

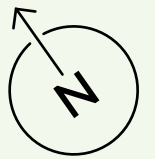


BELGRAVE ROAD

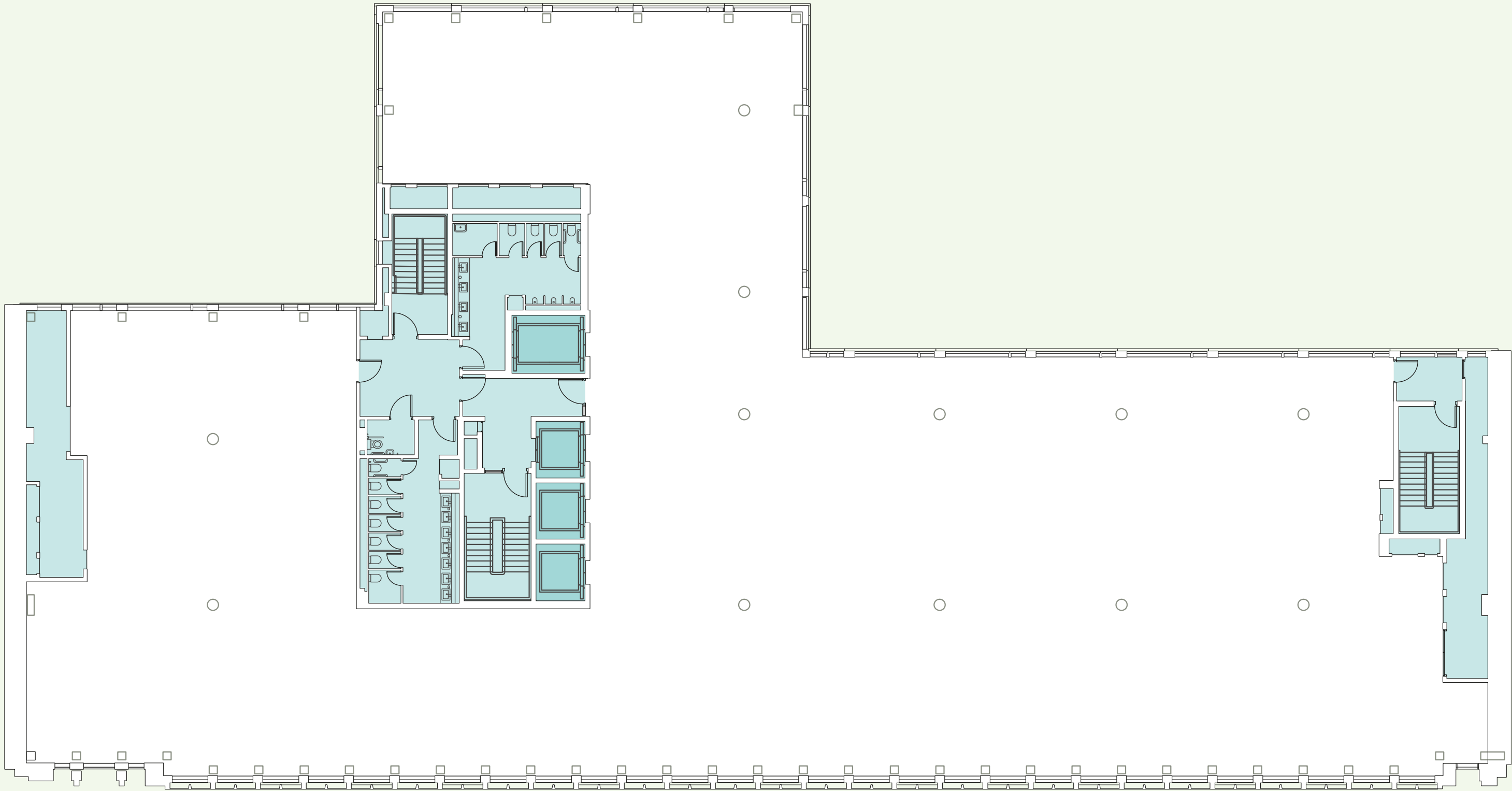
FOURTH FLOOR

Workspace
14,034 sq ft

-  WORKSPACE
-  CORE



GUILDHOUSE STREET

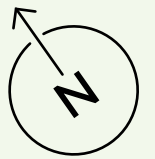


BELGRAVE ROAD

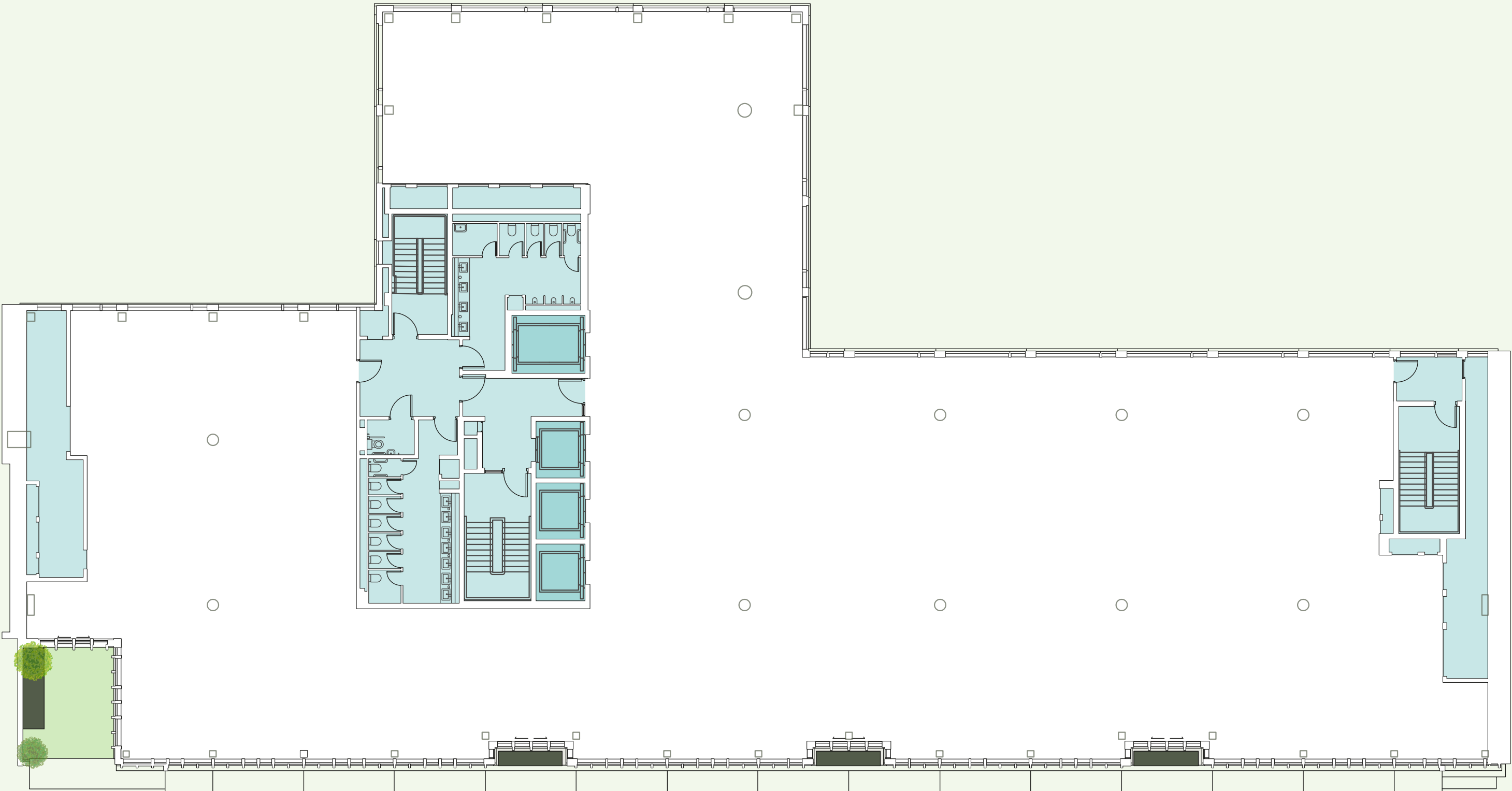
FIFTH FLOOR

Workspace
14,065 sq ft

- WORKSPACE
- CORE



GUILDHOUSE STREET






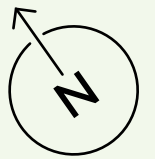
BELGRAVE ROAD

SIXTH FLOOR

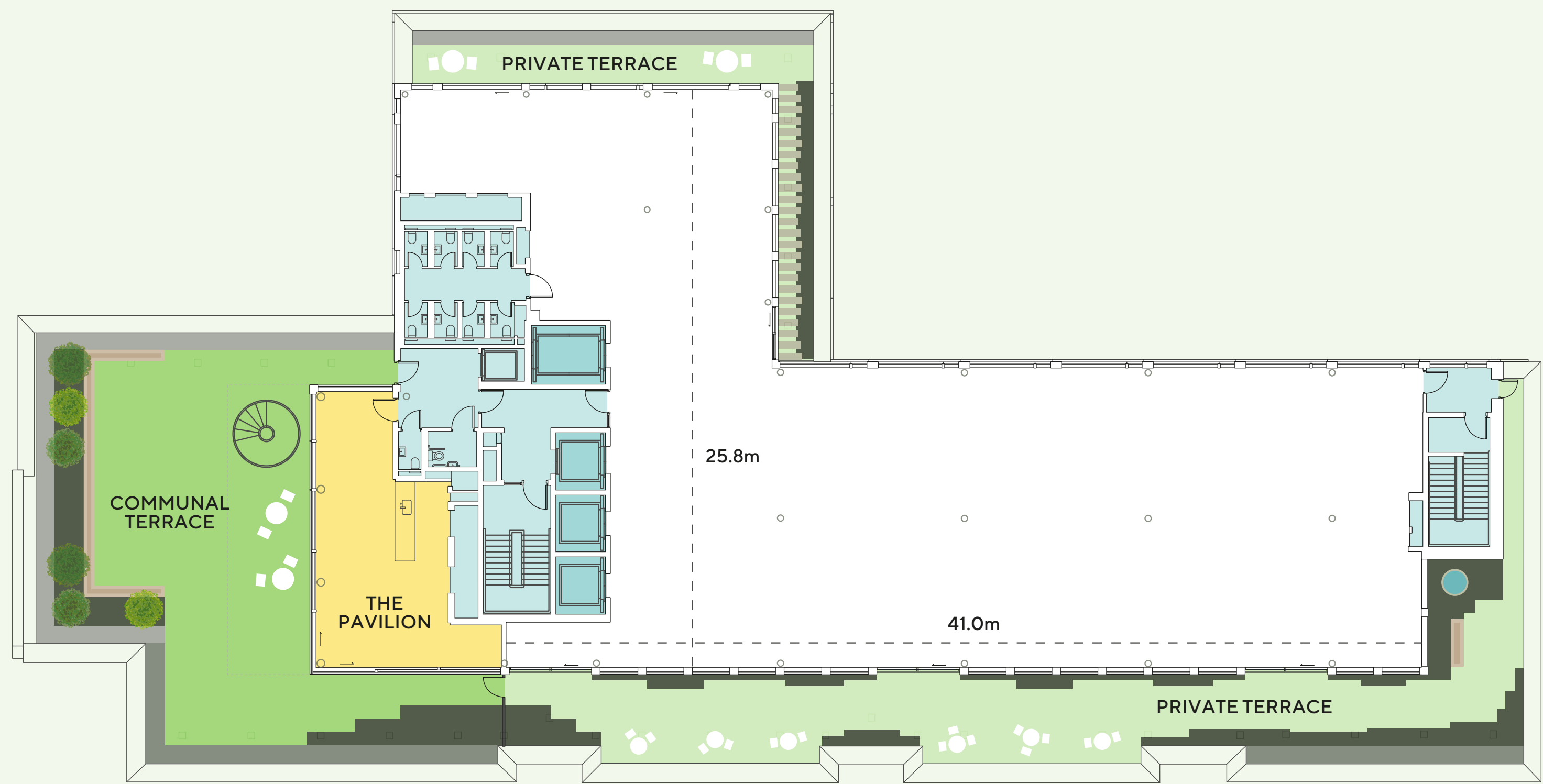
Workspace
13,165 sq ft

Private Terrace
251 sq ft

-  WORKSPACE
-  PRIVATE TERRACE
-  CORE



GUILDHOUSE STREET



BELGRAVE ROAD

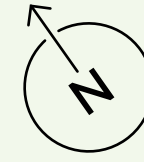
SEVENTH FLOOR

Workspace
7,014 sq ft

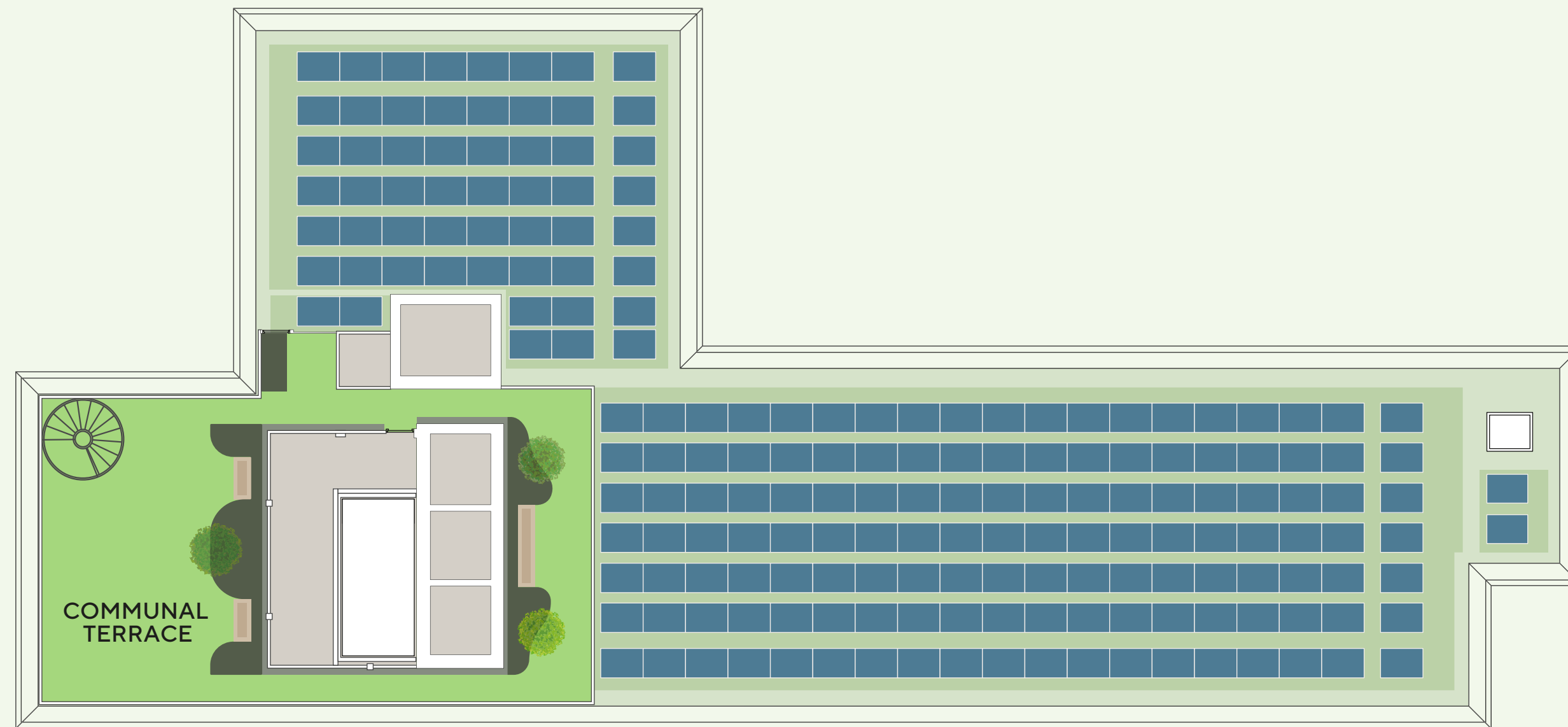
Private Terraces
2,852 sq ft

Communal Terrace & Pavilion
2,741 sq ft

- WORKSPACE
- PRIVATE TERRACES
- COMMUNAL TERRACE
- THE PAVILION
- CORE



GUILDHOUSE STREET



COMMUNAL
TERRACE

BELGRAVE ROAD

THE PLATFORM

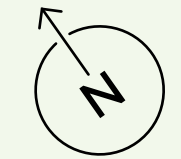
The Platform

1,854 sq ft

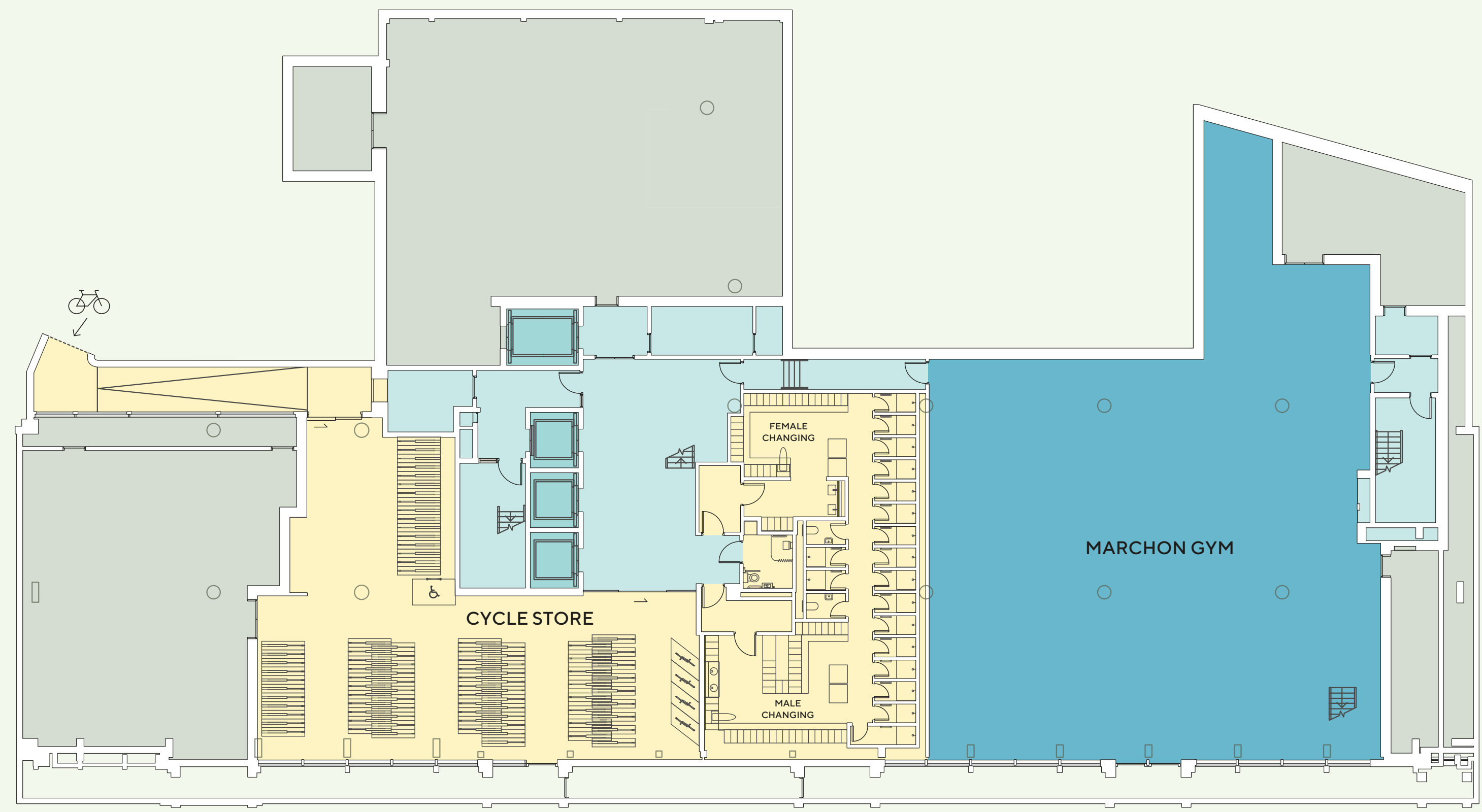
COMMUNAL TERRACE

GREEN ROOF

PV PANELS



GUILDHOUSE STREET



BELGRAVE ROAD

LOWER GROUND FLOOR

4,997
sq ft
MARCHON GYM

178
bicycle
spaces

177
wet and
dry 'smart'
lockers

19
showers

5
electric
scooter
docks

1
bicycle
maintenance
station

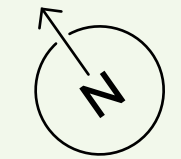
14
folding bike
locker spaces

2
filtered
hydration
taps

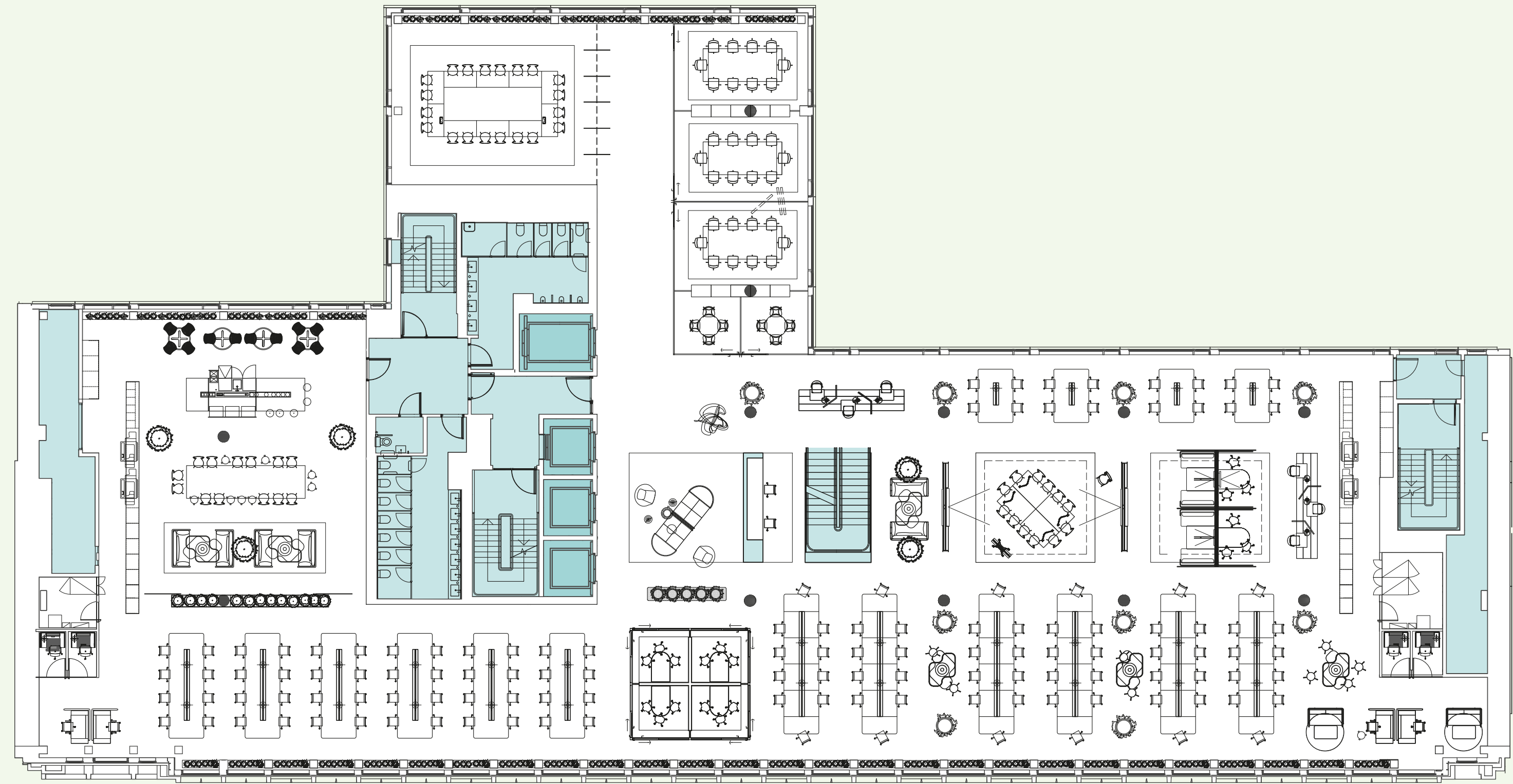
- Vanity stations with hair drying facilities
- Ironing facilities
- Towel service

- COMMUTER FACILITIES
- MARCHON GYM
- REFUSE & PLANT
- CORE

SPACE PLANS



GUILDHOUSE STREET



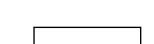

BELGRAVE ROAD

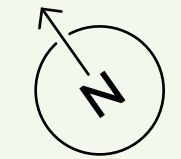
TYPICAL CREATIVE

14,037 sq ft (Second Floor)

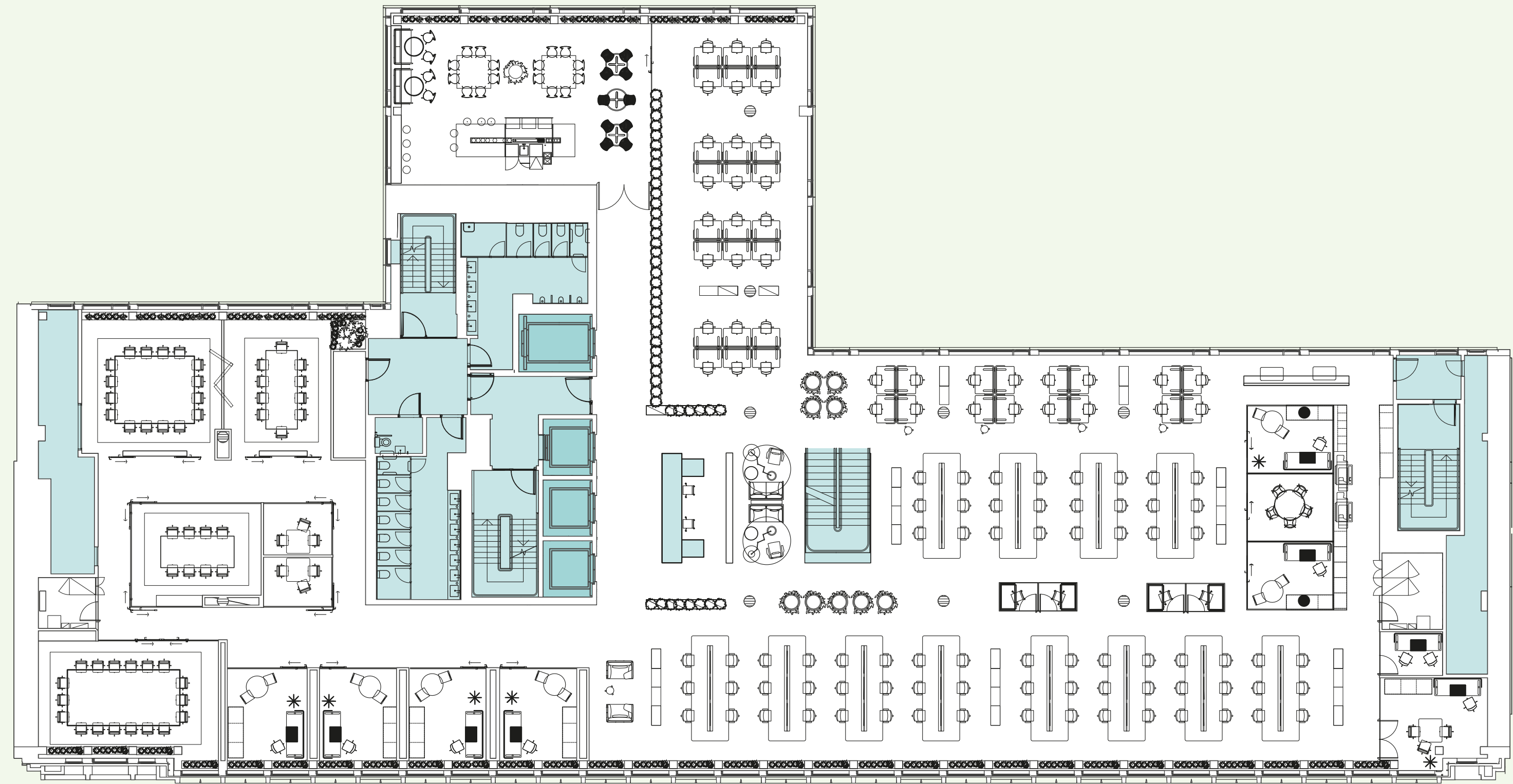
Total
128 seats | 10 sq m p/p

- | | | | |
|------------|---|------------|---------------------------------|
| 128 | Open workstations | 2 | Collaborative high table booths |
| 4 | 3p internal meeting rooms | 1 | Informal flex space |
| 3 | 10p meeting rooms (2 x rooms can be combined) | 4 | Informal collaboration spaces |
| 2 | 4p meeting rooms | 1 | Breakout space |
| 1 | 20p boardroom | 2 | Comms rooms |
| 6 | Hotdesks | 2 | Print/copy/store spaces |
| 4 | Phone rooms | 128 | Lockers |
| 2 | Collaborative team booths | 1 | Reception and waiting |

 WORKSPACE
 CORE



GUILDHOUSE STREET



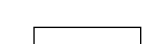

BELGRAVE ROAD

TYPICAL CORPORATE

14,037 sq ft (Second Floor)

Total
118 seats | 12 sq m p/p

- | | | | |
|------------|--|-----------|-------------------------|
| 112 | Open workstations | 1 | Large office |
| 1 | 16p meeting room | 1 | 18p boardroom |
| 1 | 10p meeting room | 5 | Phone rooms |
| 1 | 8p meeting room | 1 | Informal bench seat |
| 2 | 3p meeting rooms | 1 | Breakout space |
| 3 | 10p meeting rooms
(2 x rooms can be combined) | 1 | Comms room |
| | | 1 | Print/copy/store spaces |
| 2 | 4p meeting rooms | 48 | Lockers |
| 1 | 4p internal meeting room | 1 | Reception and waiting |
| 6 | Offices | | |

 WORKSPACE
 CORE

CONTACT

A development by:

Quadrum 

11belgrave.co.uk

Leasing agents:

CBRE

Matt Chicken

+44 (0)7852 205 099
matt.chicken@cbre.com

Joe Gibbon

+44 (0)7585 987 546
joseph.gibbon@cbre.com

Alex Rae

+44 (0)7824 417 097
alexander.rae@cbre.com

 **CUSHMAN &
WAKEFIELD**

Andy Tyler

+44 (0)7973 836 236
andy.tyler@cushwake.com

Matt Waugh

+44 (0)7912 977 980
matt.waugh@cushwake.com

Guy Ritcher

+44 (0)7741 094 570
guy.ritcher@cushwake.com